



Wittgenstein Centre

FOR DEMOGRAPHY AND
GLOBAL HUMAN CAPITAL

Religious and ethnic neighbourhood profiles of Vienna: A comparison of two dimensions of urban diversity

Ramon Bauer & Markus Springer

ICPG 2013 Groningen (Session 6), 26 June 2013



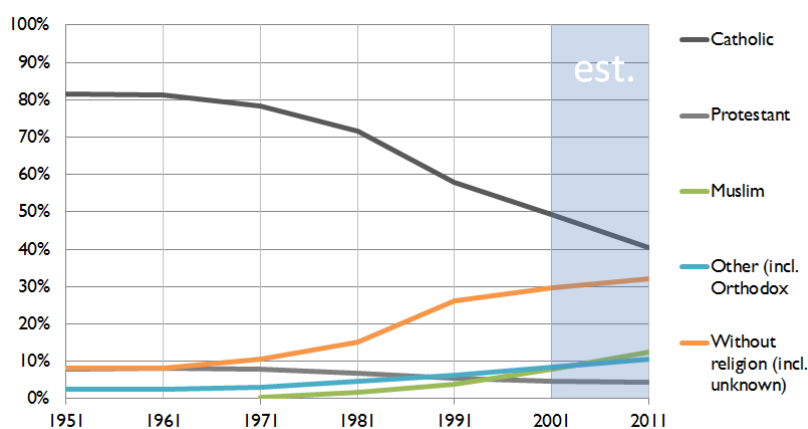
Outline

- The **WIREL** project
 - **Migration** and other drivers of the **changing religious composition** in Vienna
- **Residential patterns** by religion and ethnicity
 - Data, **measures** and **classifications**
 - Trends in residential **patterns 1971 – 2001**
- Conclusions & next steps

The WIREL project

- **WIREL** – “Past, present and future religious prospects in Vienna 1950 – 2050” (**WWTF**)
- Aiming to determine the **role of religion** in shaping the demographic structure of Vienna in the **past, present** and **future**.
- **Background:** Fading domination of Catholic Church
 - Progressing **secularisation & immigration**
 - Changes in population size and composition

Increasing religious diversity in Vienna



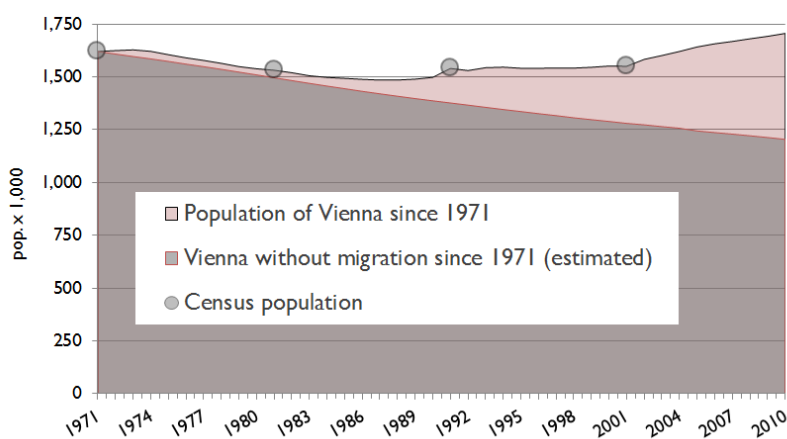
Source: Statistics Austria; estimates by WIREL

Shaping the religious composition

Forces of the **past & future**

- Secularisation
- **Migration**
- Fertility differentials
- Marriage behaviour

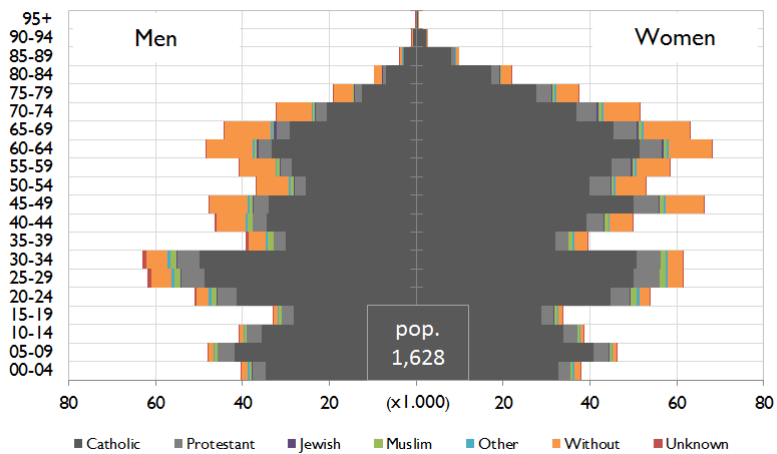
Impact of migration on size of pop.



Source: Statistics Austria;
estimates by WIREL

Population by age, sex and religion

1971



Source: Statistics Austria

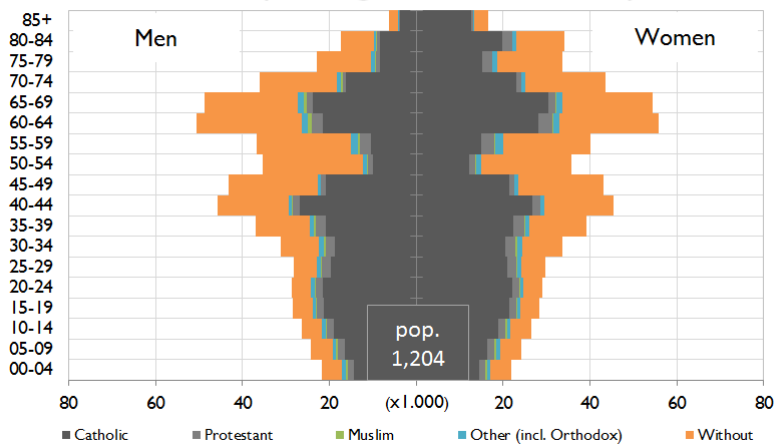


7



Population by age, sex and religion

2011 (no migration since 1971)



Source: Statistics Austria;
estimates of population size and composition by WIREL

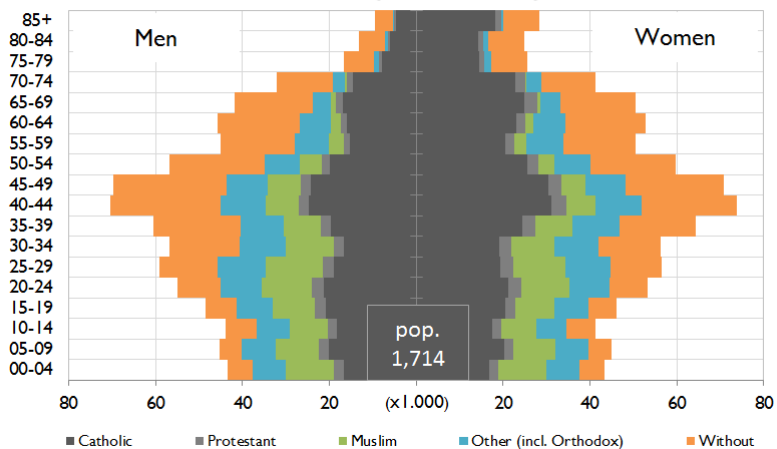


8



Population by age, sex and religion

2011 (estimated)



Source: Statistics Austria;
estimates of composition by WIREL

Residential segregation and diversity

What are the patterns and trends of residential segregation and mixing by religion and ethnicity?

- Contribution to **WIREL scenario** storylines:
 - Segregation / mixing affect social cohesion
... fostering **potential within / between group contacts**
... impact on partnership and family foundation
 - Persistent **demographic differentials vs. convergence**

Data availability & characteristics

REL6	cat	pro	mus	oth	nor	unk		
1971							RELIGION	
1981	catholic	protestant	muslim	others	no religion	unknown		
1991								
2001				ort	isr	oth		
2011	no data							
REL0	cat	pro	mus	ort	isr	oth	nor	unk

Decennial census data 1971 – 2011:

- **Religion:** 1971 – 2001 (**2011: not surveyed**)
- **Citizenship:** 1971 – 2011
- Country of birth: 2001, 2011

NAT10	AUT	DEU	POL	CSK	HUN	EU2	YUG	TUR	EUC	OTC																	
1971											CITIZENSHIP																
1981	Austria	Germany	Poland	Czechoslovakia	Hungary	EU2	Yugoslavia	Turkey	Rest Europe + CIS			Rest World															
1991																											
2001				SVK	CZE	BGR	ROU	BIH	HRV	MKD		SCG	SVN	EU13	BAL	EUM	EUR	RUS	CIX	EGY	CHN	IND	IRN	PHL	OTH		
2011																											
NAT26	AUT	DEU	POL	SVK	CZE	HUN	BGR	ROU	BIH	HRV	MKD	SCG	SVN	TUR	EU13	BAL	EUM	EUR	RUS	CIX	EGY	CHN	IND	IRN	PHL	OTH	COB

Spatial scope:

- 243 **census districts**: median population ca. 5,800 (average ca. 6,700)

Measures and classifications

Measures of segregation or mixing:

- **Evenness** ... index of dissimilarity, location quotient
- **Exposure** ... index of isolation, diversity index

Classifications of segregation and mixing:

- Poulsen, Johnston and Forrest (2001, 2006)
- **Brimicombe** (2007)
- Whright, Holloway and Ellis (2010)

Measures of segregation or mixing

Index of dissimilarity:

- **Religion** ... increase until 1990s, except “unaffiliated”
- **Citizenship** ... increase until 90s (AUT, YUG, TUR, DEU)

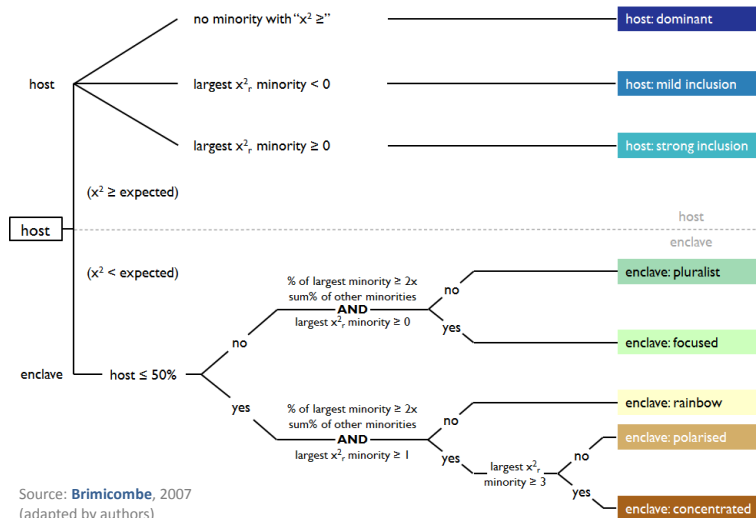
Index of isolation:

- **Religion** ... decrease (CAT, PRO); increase (MUS, OTH, NOR)
- **Citizenship** ... decrease (AUT); increase (YUG, TUR)

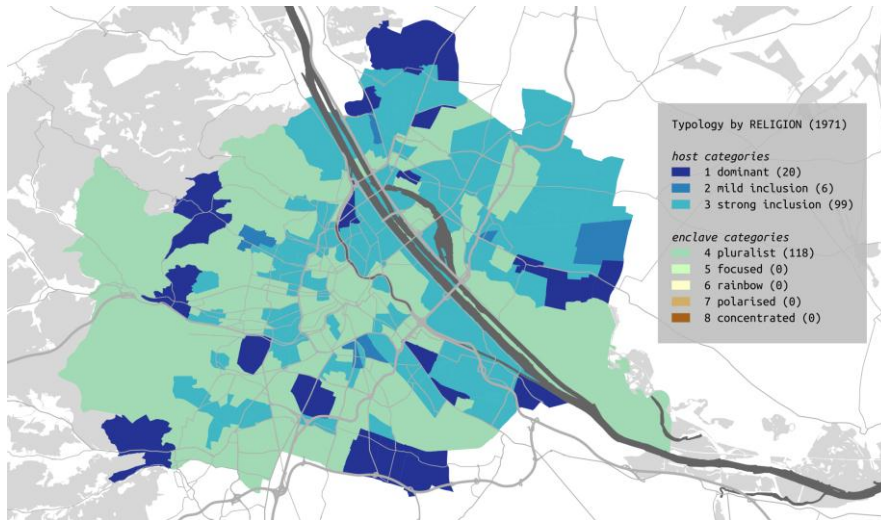
Diversity index:

- **Increase** in religion and citizenship

Classification of segregation & mixing

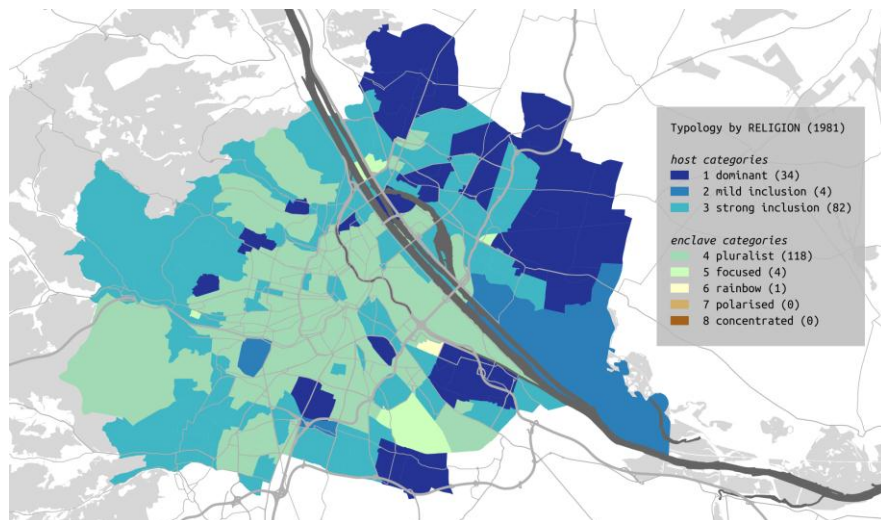


Typology by religion (1971)



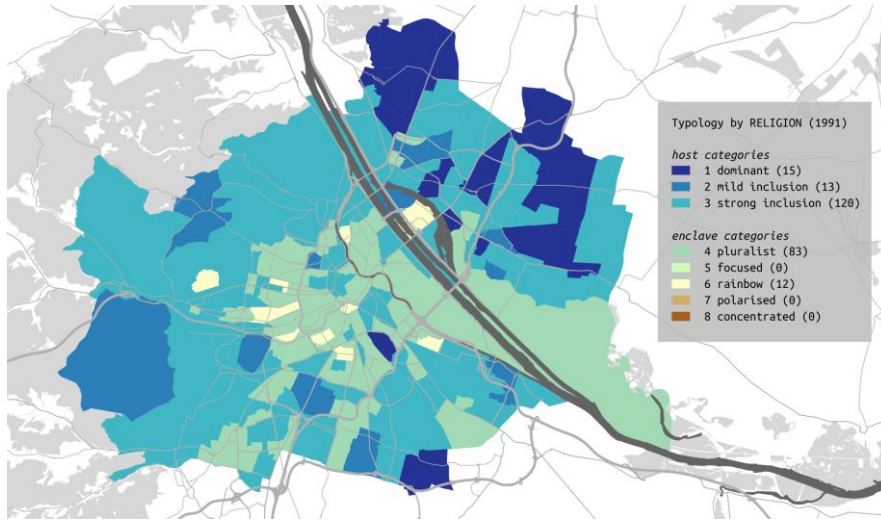
Data source: Statistics Austria

Typology by religion (1981)



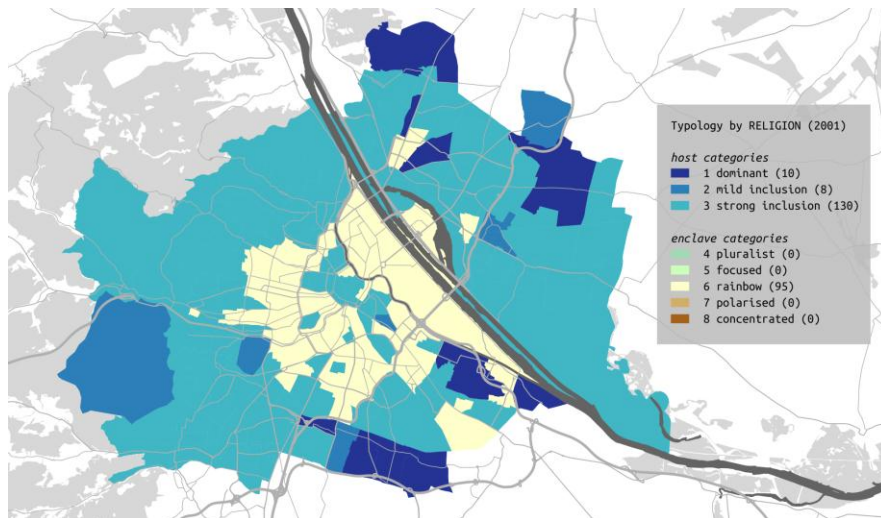
Data source: Statistics Austria

Typology by religion (1991)



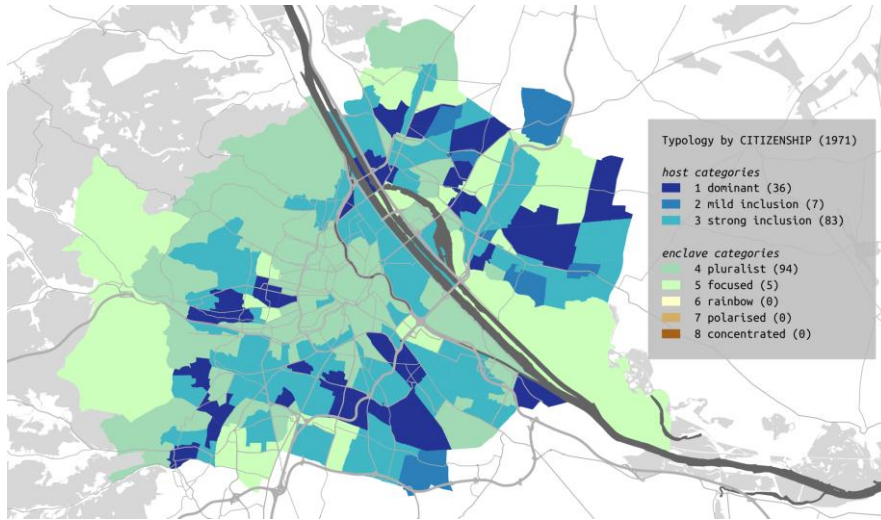
Data source: Statistics Austria

Typology by religion (2001)



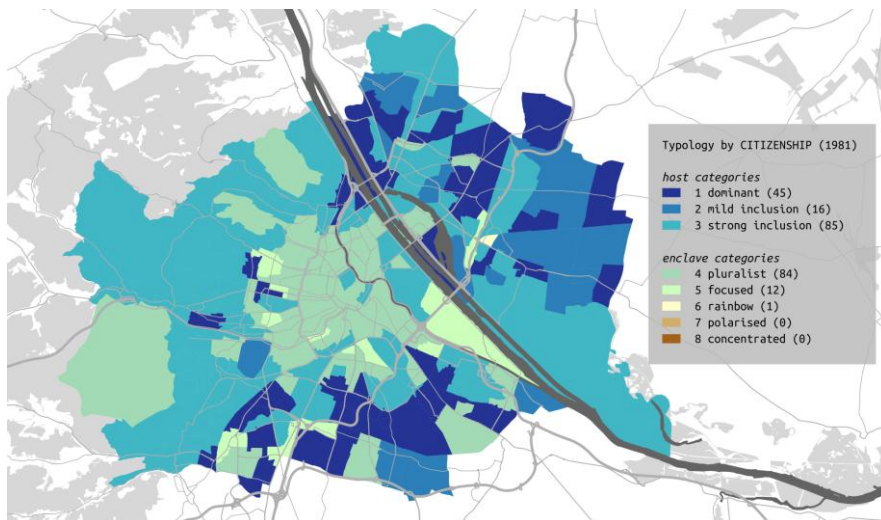
Data source: Statistics Austria

Typology by citizenship (1971)



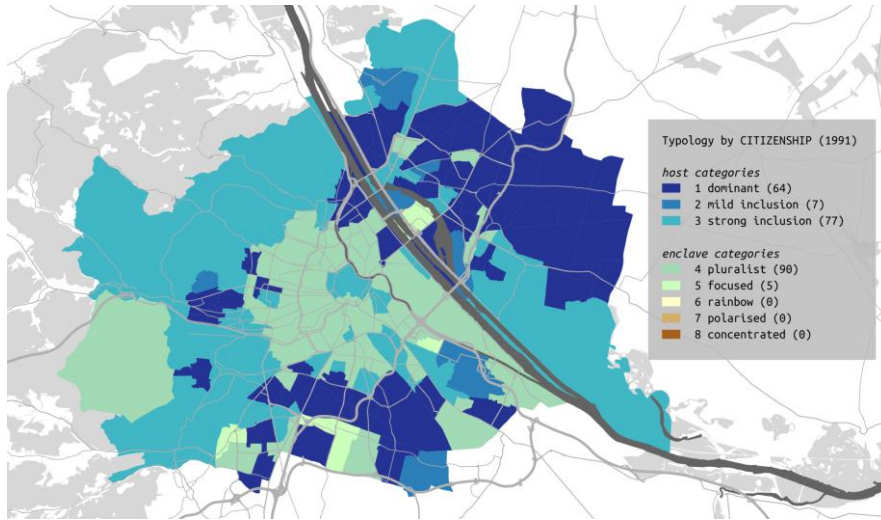
Data source: Statistics Austria

Typology by citizenship (1981)



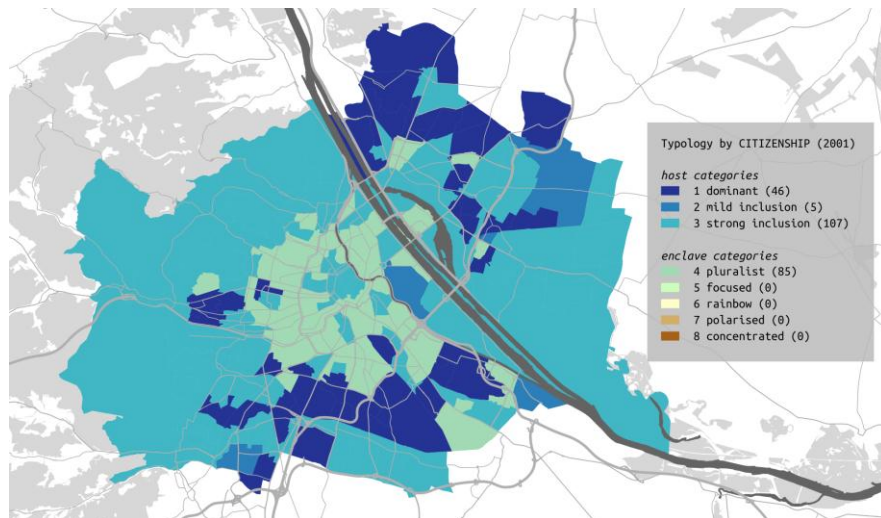
Data source: Statistics Austria

Typology by citizenship (1991)



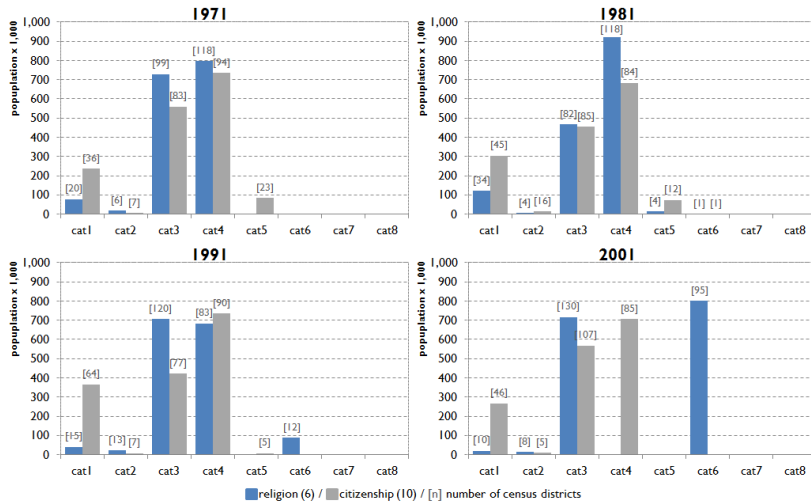
Data source: Statistics Austria

Typology by citizenship (2001)



Data source: Statistics Austria

Typology of religion and ethnicity



Conclusions and next steps

What are the patterns and trends of residential segregation and mixing by religion and ethnicity?

- **Conclusions:**
 - Patterns ... mixing in centre, host dominance around
 - Trends ... **more mixing** (decrease in host dominance); large part of pop (2001) in mxd NH's (religion > citizenship)
- **Next steps:**
 - Relationship citizenship and country of birth (2001, 2011) in order to **approximate NH patterns by religion in 2011**

Religious and ethnic neighbourhood profiles of Vienna: A comparison of two dimensions of urban diversity

More information on WIREL:
www.wirel-project.at

Contact:
Ramon.Bauer@oeaw.ac.at